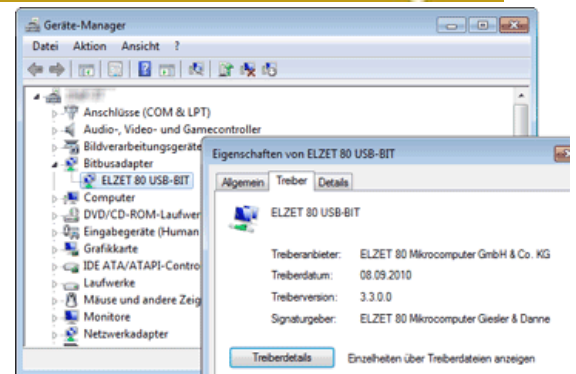




BITBUS

- Windows Driver Model compatible driver for ELZET80 's PC BITBUS master boards:
 - IPC-BIT900<PCI (PCI bus)
 - IPC-BIT900A (ISA bus)
 - IPC-BIT900<104 (PC/104 bus)
 - USB-BIT
- One driver for all of Microsofts latest operating systems
 - Windows® Vista
 - Windows® 7
 - Windows®ME
 - Windows®2000
 - Windows®XP
 - Windows®2003 Server
 - supports Hyperthreading and Intels CoreDuo Hardware
 - Compatible with ETH-BIT BAPI-over-TCP/IP driver
- Interrupt driver for optimum network performance
- Integrated in Windows® hardware management.
- Supports up to 6 boards
- BEUG standard API "BAPI" as DLL gateway to user applications
- Allows up to 16 concurrent user applications per board

New: 64 Bit for XP, Vista and 7



Order codes:

SFT-BITWDM 199.- € *

License for use in one project as described with 1/2 year limited e-mail support.

SFT-BITWDMSUP 199.- € *

Support renewal /additional contact for 1 year.

* all prices in EUR ex works (+VAT/MwSt inside Germany)

ELZET 80 supports its range of BITBUS master boards now with this uniform driver conforming to the Windows Driver Model standard for all of Microsoft 's modern operating systems.

The new WDM driver is based on the experience made with the Windows-NT-driver for the IPC-BIT900A and IPC-BIT900<PCI. Like the NT-driver it provides interrupt driven access to the board and is fully integrated within the Windows driver concept.

The application accesses the driver through the "bapi.dll" interface library. BAPI (BITBUS Application Programmers Interface) is the BITBUS European Users Group standard for access to hardware of different manufacturers. With the use of BAPI your applications get independent of the board used (contrary to for example the "bitdll" used with our Win3.1 and Win95 drivers that only will work with ELZET80 boards)

The WDM driver will access up to 6 boards concurrently (and more won't fit into any standard PC). Each board can be accessed by up to 16 concurrrent applications such as a visualization, a data logger or a debugger. The assignment of replies to the application are - as supported by the source-task-field of the BITBUS protocol - automatically handled by the driver.

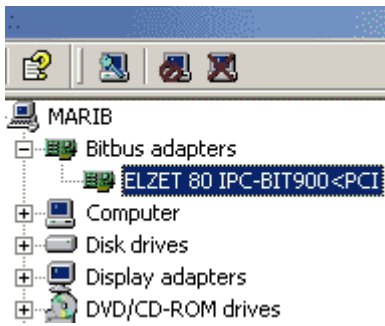
With complying hardware (IPC-BIT900<PCI) the WDM driver also adds Plug&Play functionality with automatic assignment of i/o address and interrupt channel and responds to the power managment functions of the BIOS and the operating system. While the boards for ISA and PC/104 need a manual installation using the standard Windows® mechanism (System control | Hardware | Select driver | Have disk), the PCI board is automatically detected after the first insertion:

Found New Hardware



Network Controller

The installation wizard guides you through the usual sequence of steps where you are prompted to insert the disk with the driver. Afterwards the driver can be found in the "Device Manager" from where it also can be updated or uninstalled.



The WDM driver is supplied as an application bound general license for use in all products of one project of the customer according to the license agreement. It comes with half a year of free e-mail of one contact person at the customers site. Additional contacts or renewals are available.