

## BITBUS

- OLE for Process Control (OPC) Server for ELZET80 BITBUS networks
- complies with the OPC Data Access 1.0a and 2.04 specification
- Browsable Nodes™ technology displays all reachable in- and output of ELZET80 BITBUS-nodes
- restoring of lost connections
- network access viaDCOM
- simple access with data evaluation software (e.g.: LabView, WinCC, DIAdem, ...)

The OPC Standard (OLE for Process Control) allows an uniform access from Windows® programm (visualization, reporting and control applications) to any process data at a or even at several field busses. Manufacturers of control equipment and measuring devices offer an OPC server and manufacturers of e.g. visualization tools OPC clients.

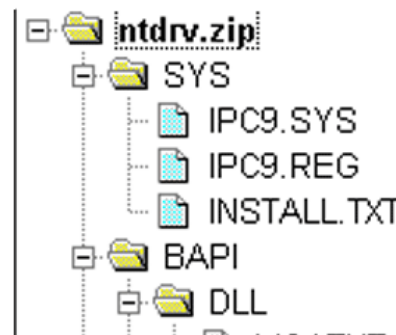
The communication is based on OLE-technology for network component modelling DCOM. OPC servers present data as data items to the network so they can be accessed by all computers on the network.

Objects usually are separate outputs (Valves, motors, relays) or inputs (temperature sensors, proximity sensors). They can also represent variables of a control circuit or a status word, that summarizes the status of a complete system. The OPC-Server allows the OPC-Client to define groups and variables and to refresh those cyclically.

ELZET80's OPC server is the interface to the Bitbus field devices. It is based on the Express-I/O hardware abstraction layer and XIO-OPC communication task.

Objects available can be listed in a table for selection.

Express-I/O presents all process I/O as logical devices. XIO-OPC presents all logical devices in a browsable list, also known as Browsable Nodes™.



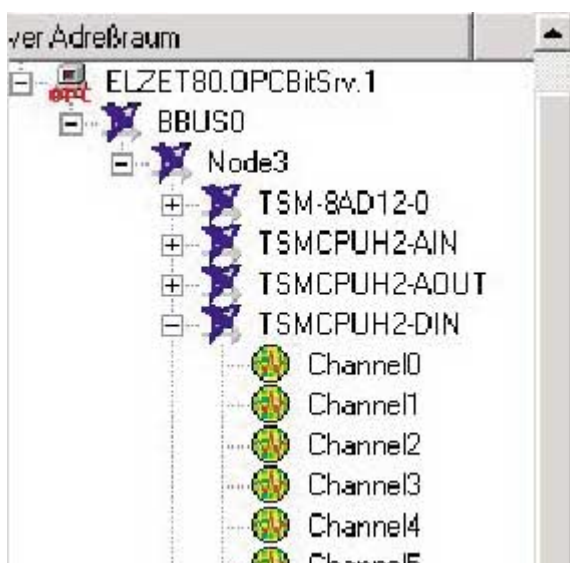
Order codes:

**Sft-OPCBitSrv**

**599.- € \***

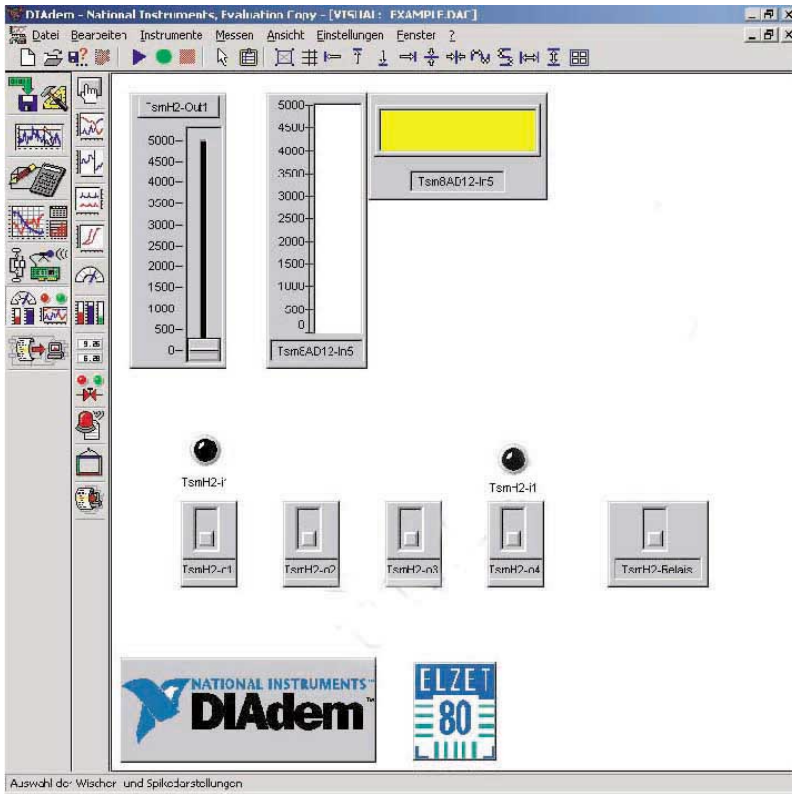
single server license

\* all prices in EUR ex works (+VAT/MwSt inside Germany)





All modern visualization systems inputs and outputs can be arranged graphically and provided with a matching icon. The example picture was made in DIAdem from National Instruments.



For linking control variables Elzet80 uses the Softbus-concept for globalization of variables. OPCBITSRV is also able to reestablish lost connections.